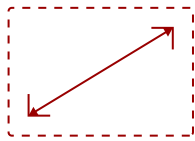


## LDP163-091 - 163" ALL-IN-ONE PREMIUM 4K ULTRA HD DIRECT VIEW LED DISPLAY

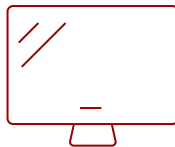
### Key Features

---

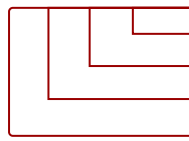
- Seamlessly Immersive
- Versatile Installation Orientation
- Super-Sized Video Walls
- Amazing Visuals
- Theater-Level Audio
- Enhanced Durability and Reliability
- Simple and Easy Setup
- Peace of Mind
- Device Management Made Easy
- Wireless Content Sharing
- Easy Maintenance



163  
**DISPLAY**



Fine Pixel Pitch LED  
**PANEL**



3840x2160  
**RESOLUTION**

### Product Description

---

The ViewSonic® LDP163-091 All-in-One Direct View LED Display is a premium 163" larger-than-life digital screen that delivers an incredible audio-visual experience for any high-end corporate lobby, boardroom or conference room. Featuring a 120% Rec. 709 wide color gamut, lightning-fast 3,840Hz refresh rate, and a peak brightness of 600 nits, this display delivers true-to-life color and extraordinary detail for every video, presentation and lecture. The display is also equipped with Harman Kardon speakers, 4K/HDR/HLG support and PIP/PBP display modes for immersive content delivery. At 25mm slim and lined with a 5mm frameless edge, the sleek LDP163-091 exudes sophistication and elegance in any modern setting.

### Specifications

---

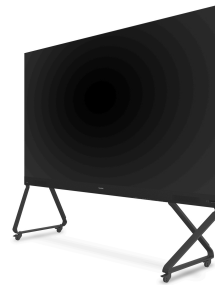
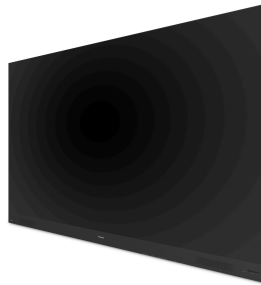
More Information

**Display Type**


Direct View LED

<b>Screen Size</b>	163
<b>Viewable Area (in.)</b>	163
<b>Orientation</b>	Landscape / Portrait
<b>Light Source</b>	Fine Pixel Pitch LED
<b>LED Pitch Size (mm)</b>	0.93
<b>LED Grayscale</b>	14 bits
<b>Display Resolution</b>	3840 x 2160
<b>Refresh Rate</b>	3,840Hz
<b>Panel Type</b>	Fine Pixel Pitch LED
<b>Aspect Ratio</b>	16:9
<b>Static Contrast Ratio</b>	20,000:1 (Typical)
<b>Backlight Life (Hours)</b>	100,000
<b>Brightness</b>	500 cd/m2
<b>Viewing Angles</b>	170° horizontal, 170° vertical
<b>Wifi</b>	2.4G / 5G n
<b>OS</b>	Android 9.0
<b>Media Player Type</b>	Yes
<b>CPU</b>	MTK9669
<b>Memory</b>	4GB DDR4
<b>Storage</b>	64GB (56GB available)
<b>Internal Speakers</b>	20W (x2)
<b>PC Resolution (max)</b>	3840x2160
<b>Mac® Resolution (max)</b>	3840x2160
<b>HDMI 1.4 In</b>	2
<b>HDMI 2.0 In</b>	3
<b>HDMI 2.1 In</b>	1
<b>HDMI 2.0 Out</b>	2
<b>3.5mm Audio Out</b>	1
<b>USB 2.0</b>	3
<b>RS232</b>	1
<b>Ethernet LAN (RJ45)</b>	1
<b>IR in</b>	1
<b>Intel® OPS Slot In (80-pin)</b>	1
<b>Voltage</b>	100-240V+/- 10%, (100-120V/30A, 50/60Hz ; 220-240V/15A)
<b>Consumption (typical)</b>	1860W
<b>Stand-by</b>	<0.5W

<b>On Screen Display</b>	Yes
<b>Remote Control</b>	Yes
<b>Temperature</b>	32-104° F (0 - 40° C)
<b>Humidity (non-condensing)</b>	20-80%
<b>Net (lbs)</b>	494
<b>Gross (lbs)</b>	732
<b>Net (kg)</b>	224
<b>Gross (kg)</b>	332
<b>Physical (in.)</b>	142.1 x 84.5 x 1.4
<b>Physical with Wall Mount (in.)</b>	142.5 x 84.5 x 3
<b>Physical (mm)</b>	3610 x 2145.3 x 35
<b>Physical with Wall Mount (mm)</b>	3610 x 2145.3 x 77
<b>Warranty</b>	5-year limited warranty on parts and labor, on-site service
<b>Recycle/Disposal</b>	Please dispose of in accordance with local, state or federal laws.
<b>PACKAGE CONTENTS</b>	Power Cord: x1, LAN Cable (Cat 5A): x1 (5m), IR Extender Cable: x1 (3m), Remote Control: x1, QSG: x1, Wall Mount: x1, Spare Parts: 42, Maintenance Tool: LD-MK-002 x1
<b>Regulations</b>	cTUVus, FCC, RoHS



**Contact Sales**  
[ViewSonic.com](http://ViewSonic.com)

888.881.8781   
 email:  
[salesinfo@viewsonic.com](mailto:salesinfo@viewsonic.com)